



CXL-3120
Installation Guide v2.0

Cloud Electronics Limited
140 Staniforth Road, Sheffield, S9 3HF England
Tel +44 (0) 114 244 7051
Fax +44 (0) 114 242 5462
E-mail info@cloud.co.uk
Web site <http://www.cloud.co.uk>

CXL-3120 Installation Guide

1 Introduction

The CXL-3120 is a 70V/100V-line module consisting of 3 PCB mounted transformers intended for use in high quality background music and public address applications in systems up to 40W rms. The CXL-3120 is installed internally to the Cloud 36/50 Integrated Mixer/Amplifier

2 Installation Information

The CXL-3120 is supplied with eight M3 x 6 fixing screws, 2 10mm M3 hex spacers a tie-wrap and three 2-way connector cables, the transformers are mounted on a PCB with plug-in screw terminal type output connectors and M3 fixing bushes. The CXL-400 is installed internally to the 36/50. 70V/100V-line systems are capable of delivering an electrical shock and so should be wired with the appropriate level of care.

3 Installation Instructions

1. Turn the power off and remove the mains supply cable.
2. Remove the top panel.
3. Configure the relevant transformers to 70V operation if required by moving the soldered link on the solder side of the PCB from the 100V position to the 70V position (the factory default is 100V).

TX1 = Zone 2

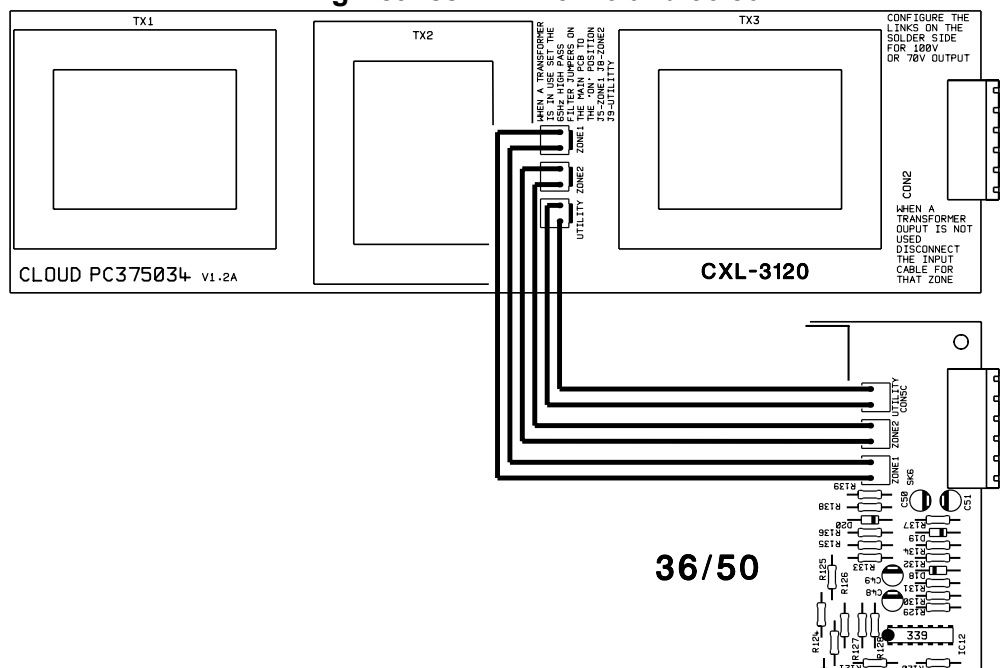
TX2 = Utility

TX3 = Zone 1

4. Carefully place the CXL-3120 board into the chassis near the mains switch, make sure that the 6-pin connector protrudes through the rectangular hole in the rear of the chassis and the transformers face the inside of the chassis.
5. Attach the CXL-3120 to the side of the chassis with the 6 M3 screws.
6. Connect the CXL-3120 to the main board with the three, 2-way cables (see note below).
7. Set the 36/50s 65Hz high-pass filters to 'ON' on any zones that drive a 100V-line network (see 'jumper settings' section)
8. Replace top panel and fit the protective cover over the output terminals using the 2 10mm M3 hex spacers and remaining M3 screws.

NOTE: If you do not require the use of a specific transformer remove the cable for it. The transformer zone numbers are clearly labelled on both the CXL-3120 connector and the main board connector.

Wiring Between CXL-3120 and 36/50

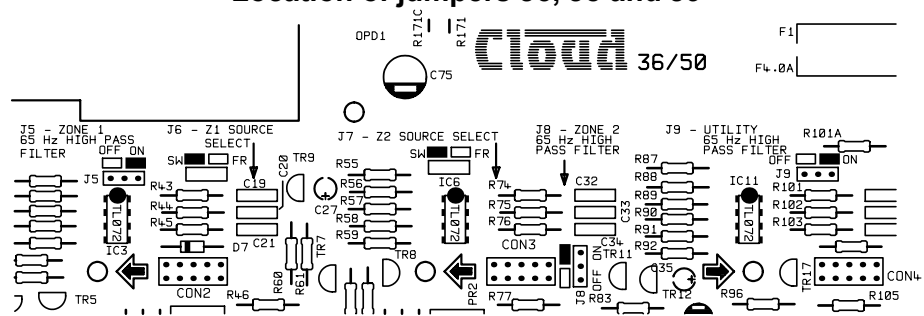


4 Jumper Settings

The CXL-3120 may be used at full power with frequencies down to 50Hz. If it is operated with high input levels at frequencies below 50Hz it may saturate causing the driving amplifier's VI limiter to operate. Each zone of the 36/50 has an internal 65Hz filter that can be turned ON or OFF by moving its specific jumper. The filter of a zone must be ON when the zone has a 100V-line transformer installed since it will protect the transformer from the high level low frequency signals that cause saturation.

Location of jumpers J5, J8 and J9

J5 = Zone 1
J8 = Zone 2
J9 = Utility



5 Output Cable Requirements

The cable used for the 100V line system must be 0.75mm² or more, double insulated and be capable of carrying at least 1A rms. With long distances it may advantageous to use thicker cable. The CXL-3120 transformers are not of the auto transformer type and hence provide a fully balanced output signal which is isolated from the amplifier.

6 Technical Specifications

| | |
|------------------------|--------------------------------------|
| Maximum Input Voltage | 16V rms |
| Input Impedance | 4 Ohms (with 250 Ohm secondary load) |
| Output power rating | 40W rms. |
| Minimum load impedance | 250 Ohms |
| Distortion | <0.03% @1kHz |

The CXL-3120 is an accessory for specific cloud products, when installed to these products the CXL-3120 will conform to the relevant European Electrical Safety and EMC Standards

CAUTION - Installation

THE CXL-3120 IS SPECIFICALLY DESIGNED TO BE FITTED INTERNALLY TO THE 36/50, SHOULD THE UNIT BE MOUNTED IN ANY OTHER ENCLOSURE, THE ENCLOSURE MUST BE ELECTRICALLY SAFE AND MEET THE REQUIREMENTS OF BS EN 60065.

THE INSTALLATION OF THE CXL-3120 IS BEYOND THE CONTROL OF CLOUD ELECTRONICS Ltd AND WE ACCEPT NO RESPONSIBILITY FOR HAZARDOUS INSTALLATIONS.

In the interest of continuing improvements cloud electronics limited reserves the right to alter specifications without prior notice.

Cloud Electronics Limited 140 Staniforth Road Sheffield S9 3HF England
Telephone +44 (0) 114 244 7051 Fax +44 (0) 114 242 5462 E-mail: Info@cloud.co.uk